





# 2030

## A STANDARD, NOT A LUXURY

By democratizing the design, we make  
safety accessible to all.  
Built like a bridge. Finished like a spa.  
Certified for life.



# THE REALITY OF FRAGILITY

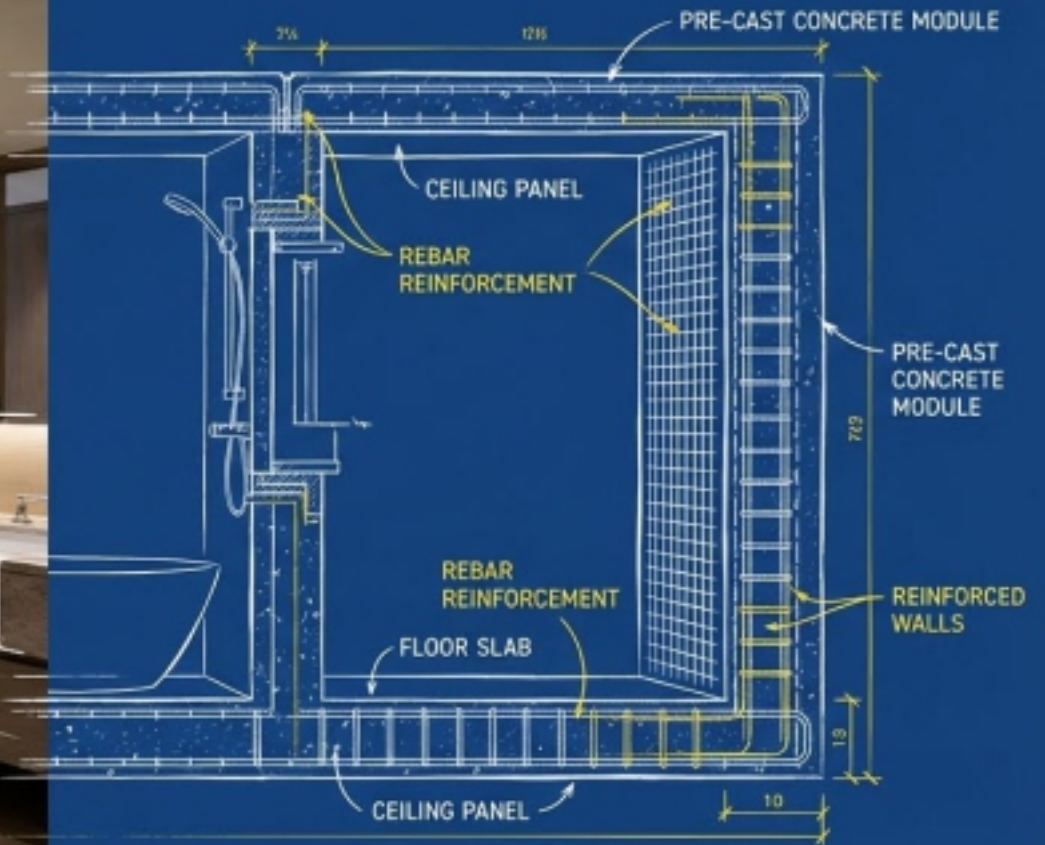
1. Standard timber/block housing fails in Cat 5 events.
2. External bunkers are expensive and often inaccessible in seconds.
3. The Shift: Protection must be integral to the home, not separate.



# THE "TORNADO BATHROOM"

Hidden in Plain Sight: A daily-use spa that doubles as a survival bunker.

The Tech: Derived from road bridge culverts. Built like a bridge, finished like a home.



# THE BUILDER'S ADVANTAGE

- **Deployment:** Installed first on the concrete pad.
- **Immediate Utility:** Acts as a lockable, secure tool shed during the build.
- **Structural Core:** Anchors the framing, stairwells, and trusses.



# STRATEGY: PUBLIC DOMAIN DESIGN

Problem: Shipping heavy concrete globally is impossible. Solution: Open Source the IP.  
Result: Local manufacturers use existing molds and cranes to pour Domistat units immediately.



# MONETIZATION: TRUST AS A SERVICE

**Revenue Model:** Certification Fees for the 'Seal of Authenticity'.

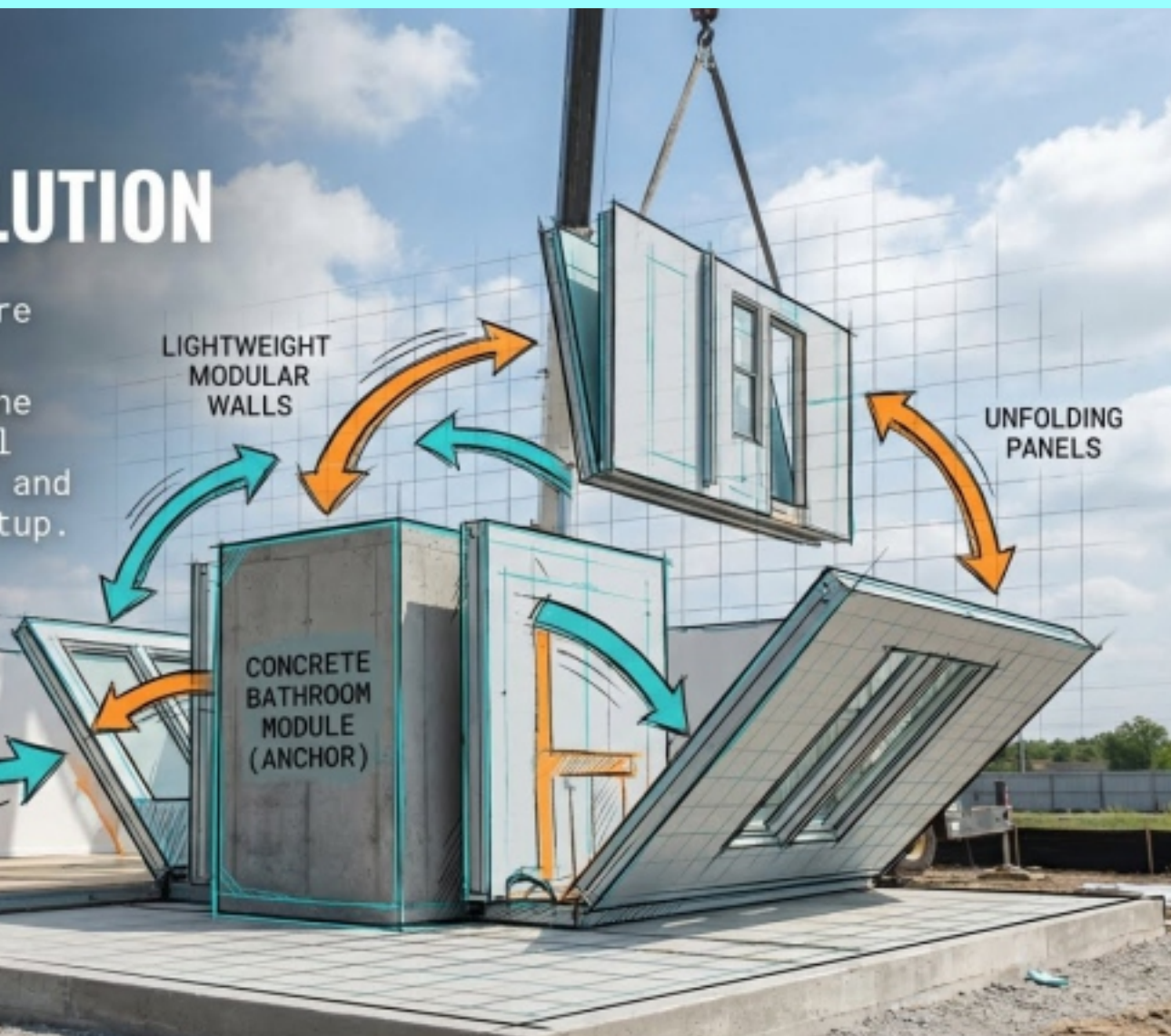
**Value:** Buyers trust the Plaque. We ensure 'Generic' never means 'Low Quality'.



# ANCHORING THE MODULAR REVOLUTION

**The Problem:** Modular homes are efficient but lightweight.

**The Fix:** Domistat provides the necessary mass and structural core. **Integration:** Delivered and bolted down prior to unit setup.



# UNIVERSAL APPLICATION

- **Scalable:** From single units to multi-stall Community Amenities Blocks.
- **RV Parks & Campgrounds:** Daily utility (showers/laundry) + Emergency Shelter.
- **Institutional:** Schools, Warehouses, and Gov Buildings.



*RV Park  
Amenities Block*



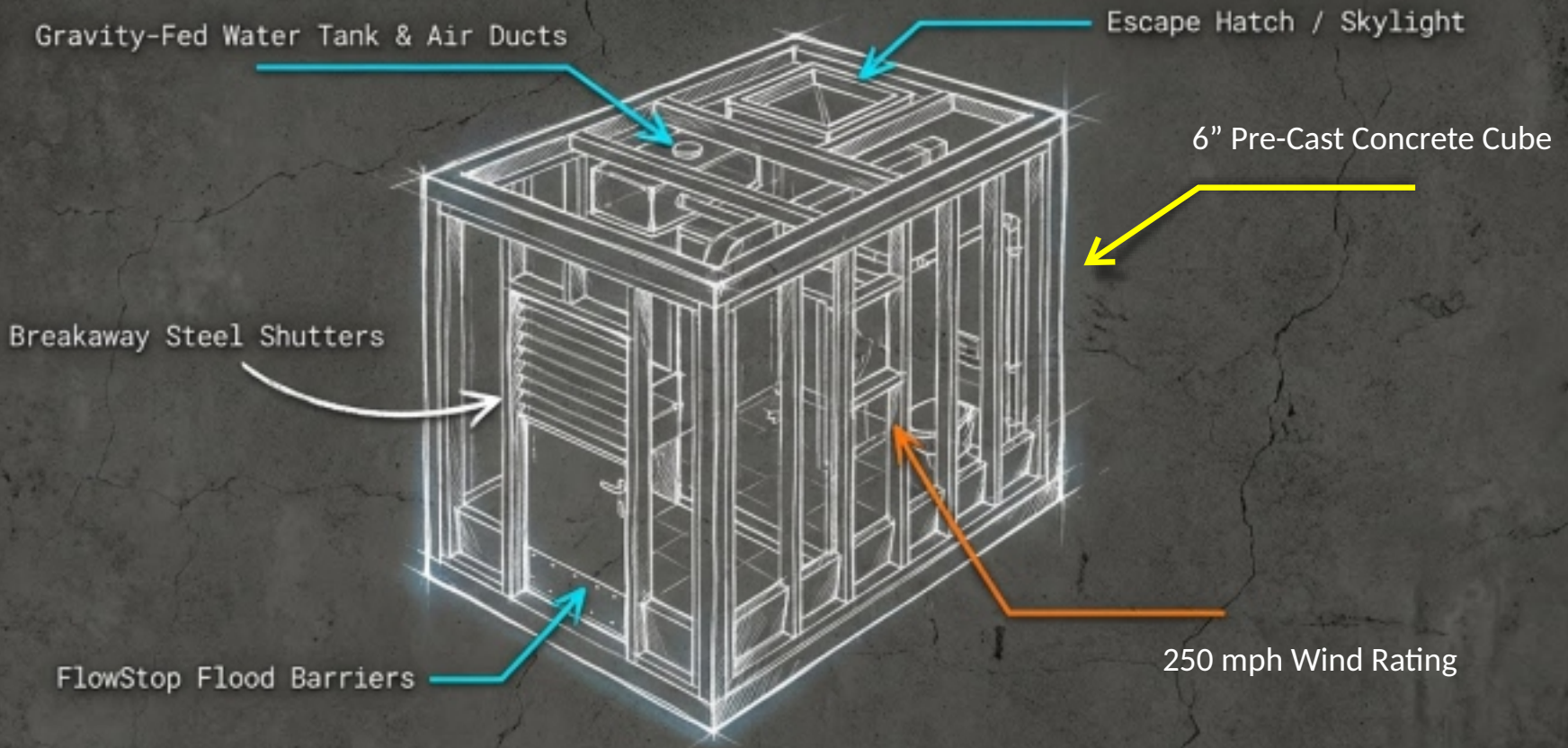
*School Yard  
Amenities*



*Warehouse  
Amenities*



# ENGINEERED FOR SURVIVAL



# THE ECONOMICS OF SAFETY

**Asset Class:** Certified safety increases resale value.

**Liability Reduction:** Insurance premiums drop for fortified structures.

**Future Proofing:** Compliant with incoming climate-resilience codes.

\$

Home  
Valuation

FOR  
SALE

Insurance  
Premiums

Time



**DOMISTAT TORNADO BATHROOM  
CUTAWAY CONCEPT**



**PRE-CAST CONCRETE  
SAFE SPACE**



**FINISHED TO YOUR OWN  
REQUIREMENTS**

**CARVED IN STONE**



A cutaway view of a pre-cast concrete structure, likely a bathroom stall or shower enclosure. The structure is made of grey concrete panels. The interior features a perforated metal floor, a white PVC plumbing system with pipes and valves, and a wooden shelf. The structure is set in a room with large windows in the background. The text "IT'S NOT GOING ANYWHERE" is overlaid on the left side of the image.

**IT'S NOT GOING  
ANYWHERE**

**PRE-CAST CONCRETE  
IT'S HERE TO STAY!**



A photograph showing the aftermath of a disaster. On the left, a concrete building is partially destroyed, with its roof and walls crumbling into a large pile of rubble consisting of wood, concrete, and debris. In the center, a tall, white, rectangular cabinet or utility box stands upright, seemingly unaffected by the destruction around it. The ground is covered in a chaotic mess of wooden planks, concrete slabs, and other debris. In the background, other damaged buildings are visible under a sky filled with heavy, grey clouds. Sunlight breaks through the clouds, creating a dramatic, hazy atmosphere. The overall scene conveys a sense of devastation and the resilience of certain structures.

**IT'S NOT GOING  
ANYWHERE**



