

# COASTAL BARRIER: THE NEW PARADIGM

Landmark Defense & Innovation.



[info@domistat.com](mailto:info@domistat.com)

ELECTRICAL CURRENTS

3V ELECTRICAL CURRENTS

POLARITY

# The Relentless Physics of the Ocean is Winning.

Traditional concrete defenses are failing. They are rigid, resource-heavy, and ultimately succumb to the dynamic forces of coastal erosion and shifting marine sands.

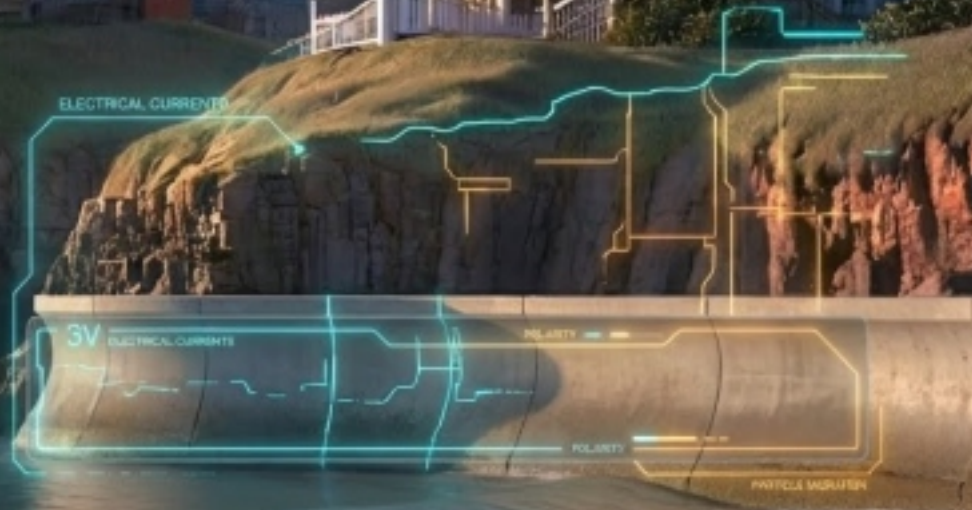
POLARITY

PARTICLE MIGRATION

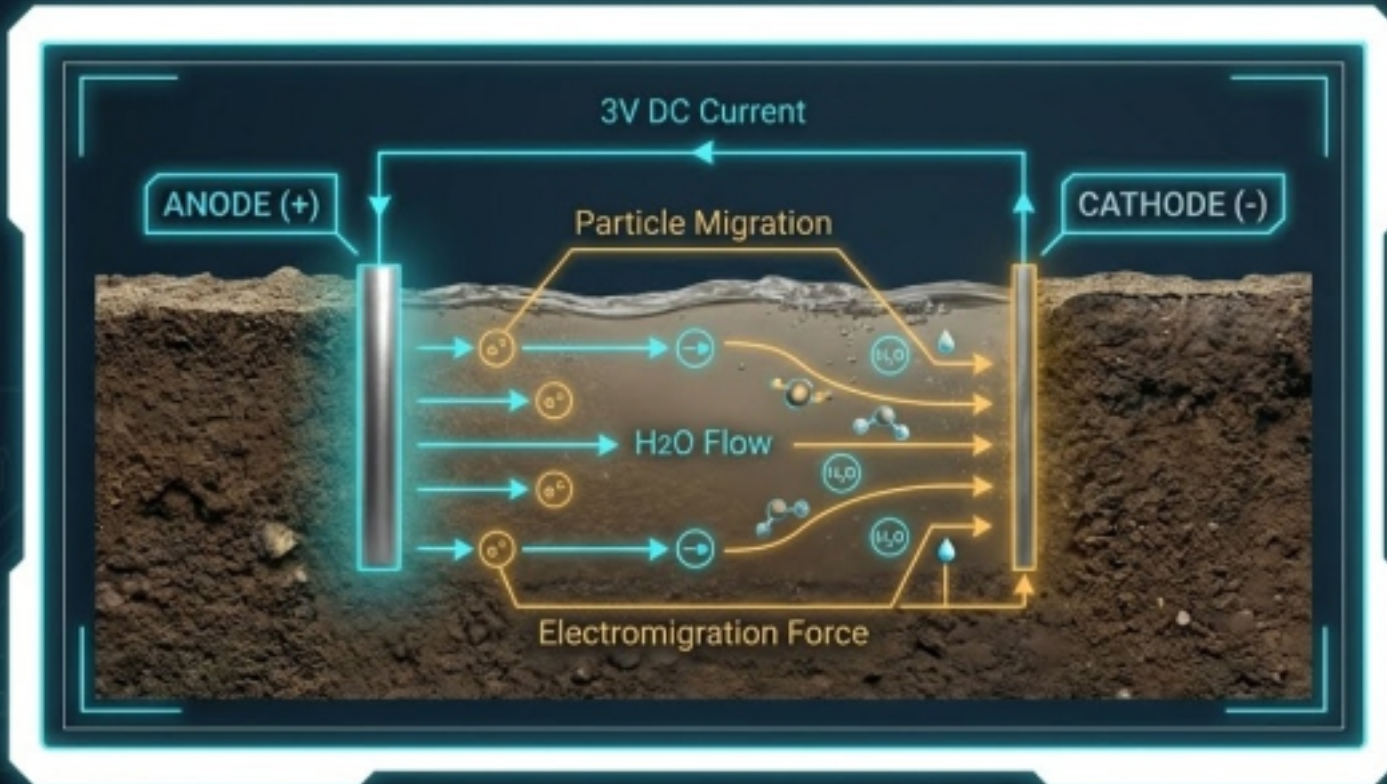


# Perhaps—All is Not Lost.

Introducing in-situ electro-consolidation.  
A fundamental revolution in material science that  
works with the environment, not against it.



# The Mechanism of Action: 3 Volts to Solid Rock



Applying a low-voltage electrical current (approx. 3 volts) to dredged materials or marine sand via embedded anodes (+) and cathodes (-).

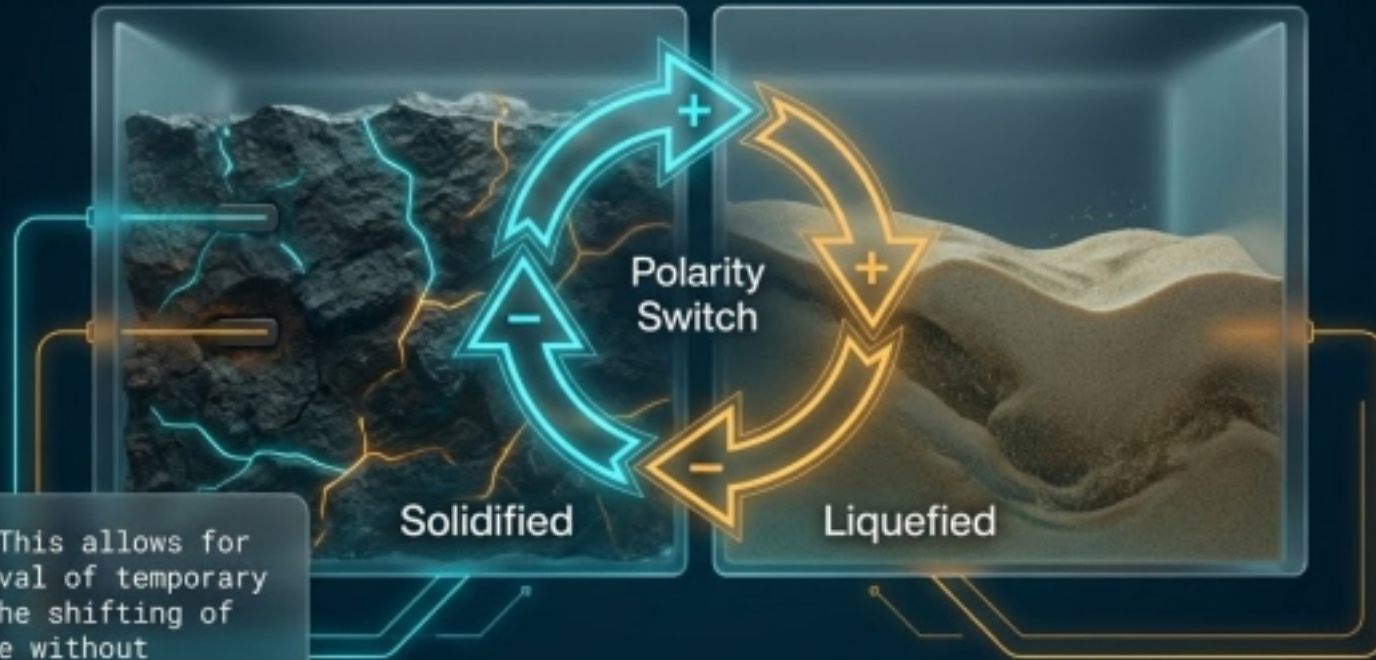
The current triggers rapid particle migration and structural changes.

Result: Loose sand consolidates into a highly durable, cement-like material.



# Crucial Reversibility: The Polarity Switch

By simply switching the polarity of the electrical current, solid, cement-like rock liquefies back into normal marine sand or slurry.



Key Insight: This allows for the easy removal of temporary barriers or the shifting of infrastructure without leaving irreversible ecological scars.



# The Paradigm Shift: Traditional vs. Electro-Consolidation

Roboto Home →

	<b>Traditional Concrete Construction</b>	<b>Coastal Barrier Electro-Consolidation</b>
<b>Material Source</b>	Imported concrete (Heavy logistics)	In-situ marine sand/slurry (Zero transport)
<b>Carbon Footprint</b>	Massive emissions (Cement production)	Minimal/Zero (Powered by low-impact solar/tidal generators)
<b>Flexibility</b>	Permanent ecological scarring	100% Reversible via polarity switch
<b>Deployment Speed</b>	Years of heavy construction	Rapid anode/cathode grid deployment

Roboto Home



←←←

←←←

←←←

# Earth Applications: The Topographical Blueprint

Roboto Hano →

1. Deep Water  
Megastructures

2. Permanent  
Foundations

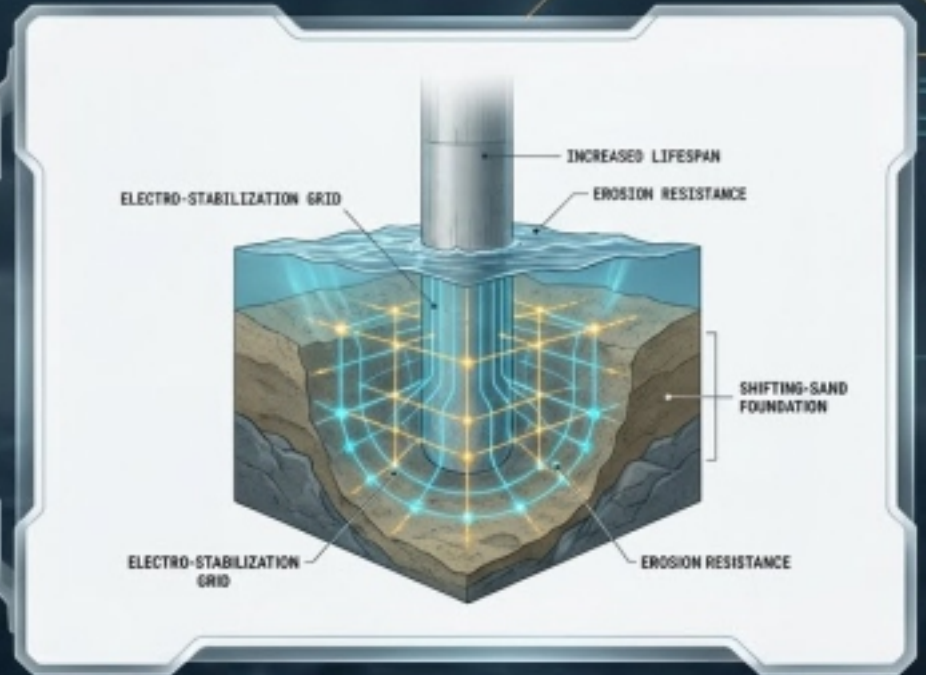
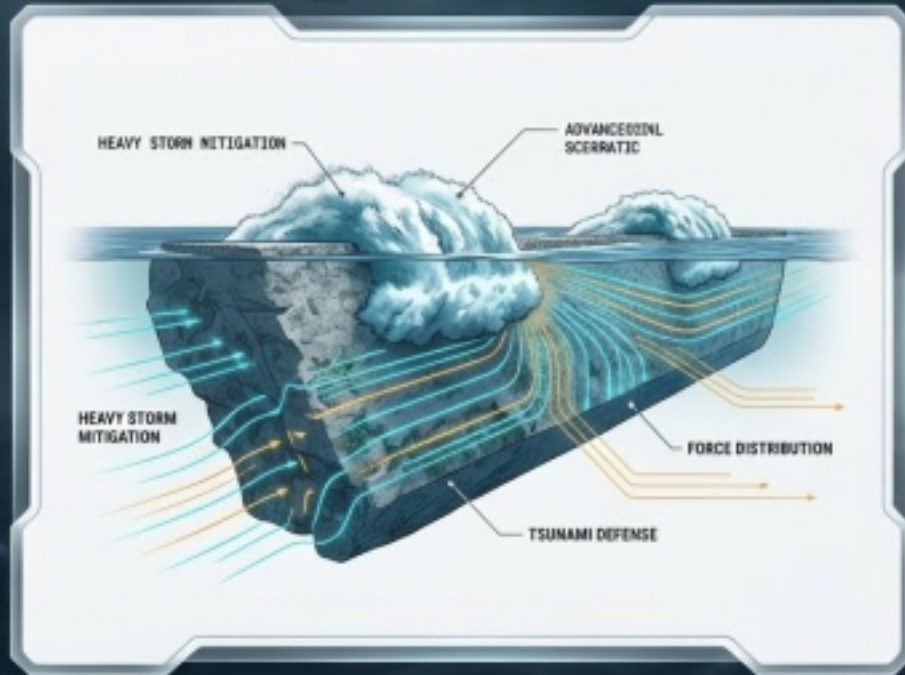
3. Shoreline  
Fortification

4. Inland Slurry  
Reclamation



←←  
Roboto Hano  
→→

# Submerged Mitigation & Shifting-Sand Foundations



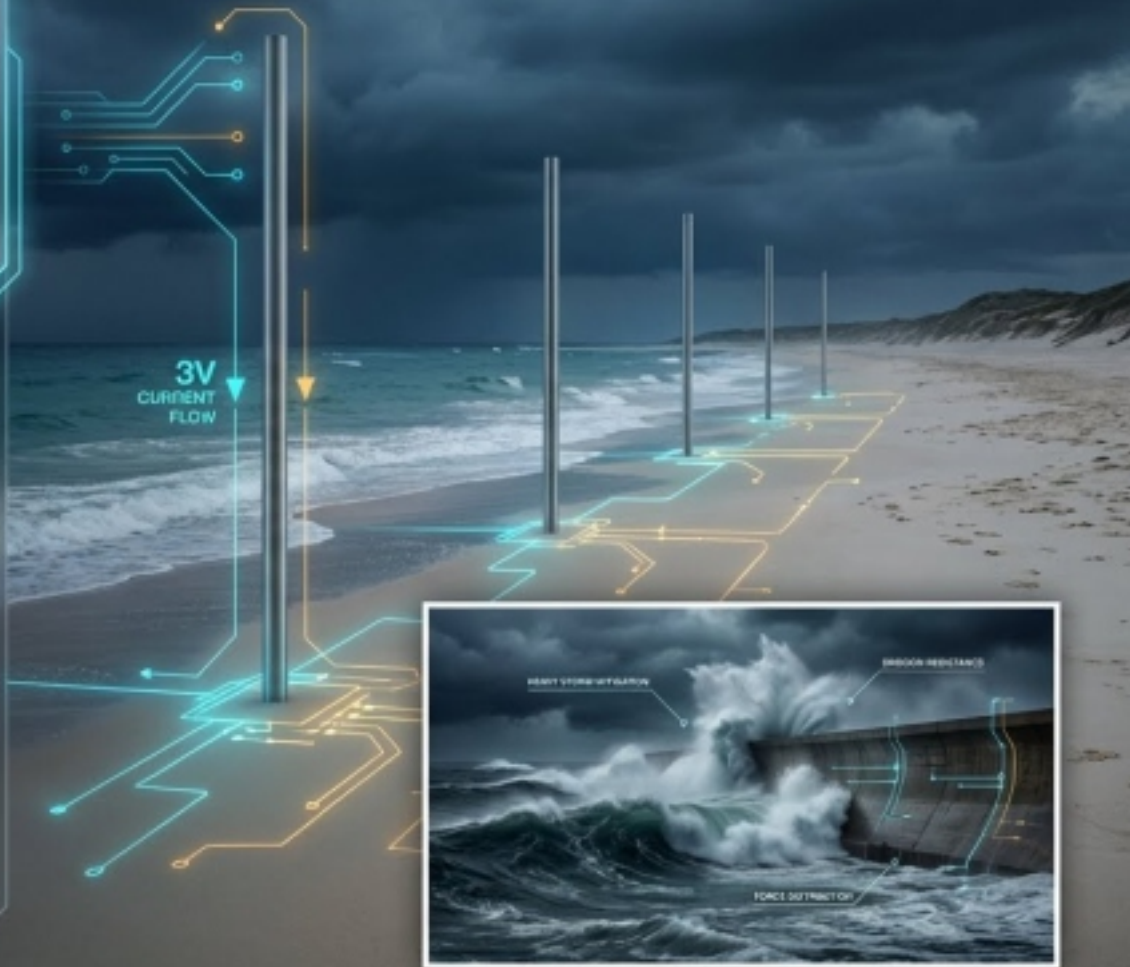
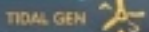
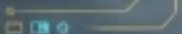
Submerged, permanent cement-like offshore barriers mitigate heavy storms and tsunamis. Simultaneously, electro-stabilization grids provide exceptional structural stability for long bridges and deep-sea wind turbines, radically increasing lifespan and erosion resistance in powerful currents.

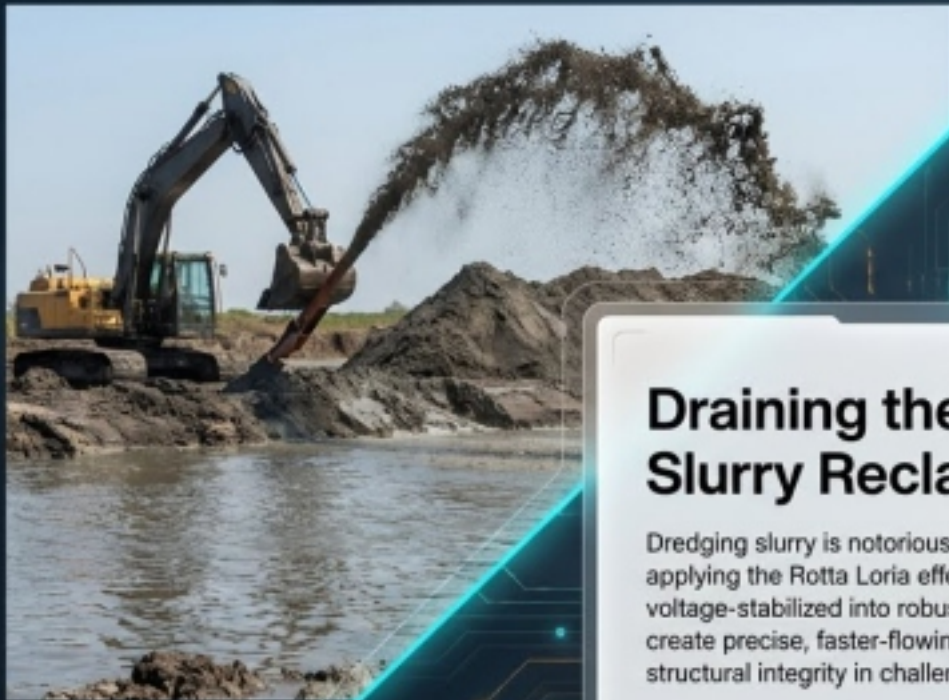


# Shoreline Fortification: Zero Concrete, Maximum Defense

Ground-breaking deployment involves sinking metal poles (anodes/cathodes) directly into the shoreline.

Powered by low-impact tidal generators, a continuous 3-volt current transforms loose marine sand into a hardened barrier, protecting property and natural resources invisibly.





SLURRY EJECTION  
85%

SLURRY EJECTION  
85%

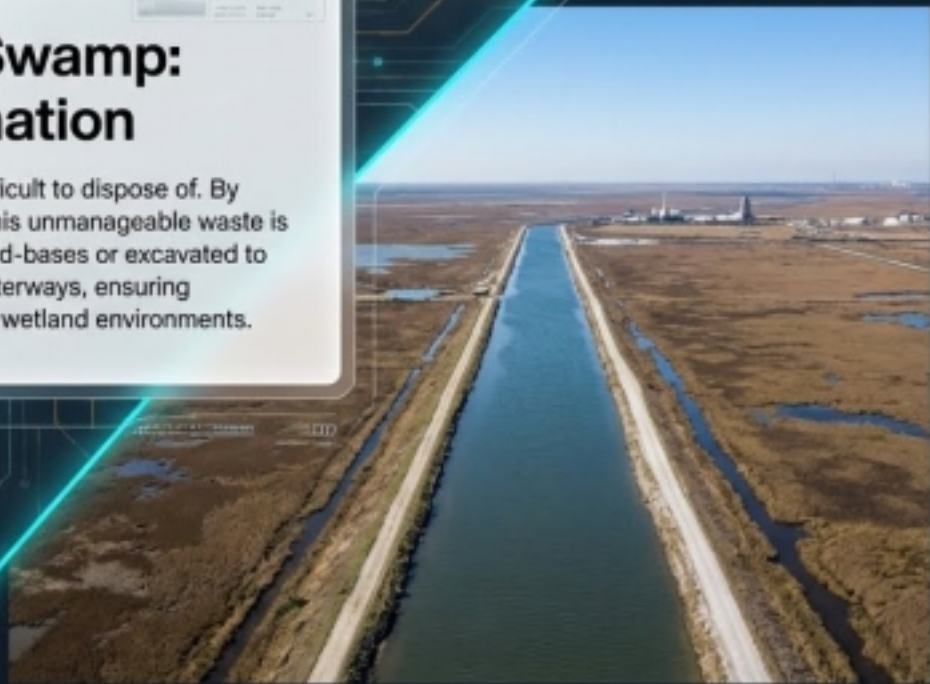
VOLTAGE STABILIZATION 3V

CANAL FLOW  
500 M<sup>3</sup>/S

## Draining the Swamp: Slurry Reclamation

Dredging slurry is notoriously difficult to dispose of. By applying the Rotta Loria effect, this unmanageable waste is voltage-stabilized into robust road-bases or excavated to create precise, faster-flowing waterways, ensuring structural integrity in challenging wetland environments.

STRUCTURAL  
INTEGRITY OK



# The Universal Constant: From Earth to the Cosmos

The physics of sand remain constant. 99% of Lunar and Martian resources consist of regolith—materials that react identically to our coastlines.

Interplanetary concrete requires only native regolith, dropped anodes/cathodes, and the addition of readily available water.

Low-voltage  
particle currents

• Saw banerision: 3V

Netrid  
data  
28V

Roboto Mono

Low-voltage  
particle migration  
of field

Roboto Mono

-1.3775

Low-voltage 3V  
resicle particle  
migration

2.874N

L: 3V  
R: 3V  
Roboto Mono

Low-voltage 3V  
electrical current

→ 1.80



# Regolith Power & Cosmic Shielding

**Critical Need:** Sustainable, portable power sources (compact nuclear or high-efficiency solar) supplying low-voltage currents.

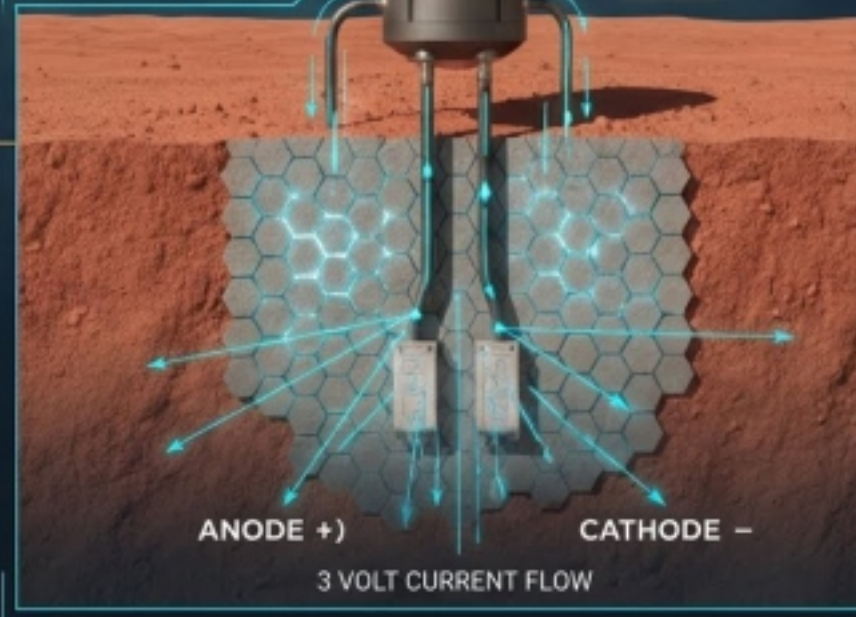
**Output:** Deep, consolidated underground tunnels and bunkers constructed directly from regolith concrete, providing vital long-term protection against cosmic rays and severe dust storms.

VOLTAGE STABILIZATION

3V

0.000.00.035

LOW-VOLTAGE  
PARTICLE CURRENTS



TUNNEL  
DEPTH  
50M

RADIATION  
SHIELDING  
EFFICACY  
99.9%

STRUCTURAL  
INTEGRITY  
OK

ANODE +)

CATHODE -

3 VOLT CURRENT FLOW



SANM BARRIER MAPPING:  
3V CURRENT

LOW-VOLTAGE  
PARTICLE  
MIGRATION

→ 0.00

LOW-VOLTAGE  
PARTICLE  
MIGRATION

→ >.000


## One Blueprint. Two Worlds.

The ultimate paradigm shift. The exact same in-situ electro-consolidation that mitigates global climate threats today will serve as the foundational infrastructure for human settlement across the cosmos tomorrow.

MARS REGDLITH  
CONSOLIDATION: 3V

INTERPLANETARY  
INFRASTRUCTURE MAP



A lighthouse stands on a rocky island in the middle of the ocean. The sky is a mix of blue and orange, suggesting sunset or sunrise. The lighthouse is a tall, cylindrical structure with a lantern room at the top. The text is centered over the lighthouse.

# The Inevitable Future of Infrastructure.

Scalable. Reversible. Universal.

