



Ventilation Shafts

Autonomous Passenger Vehicle Lanes

Fire Pump Area

Power & Fiber Optic Network

Emergency Maintenance Corridors

Ventilation Shafts

Fire Suppression System

Fire Suppression System

Ventilation Shafts

Ventilation Shafts

UNDERSTRUCTURE USA

The Economic Engine of the 22nd Century



info@domistat.com



Digging Our Way to Wealth

High-speed tunnels provide a pollution-free, protected method of long-distance transport... creating the next generation of transport, in the way that Rail and Interstate Freeways opened up the country.

Competitive Design Concepts, New Technology, and Innovative Thinking will propel the US into the future.



Compressing the Continent: The Frictionless Network



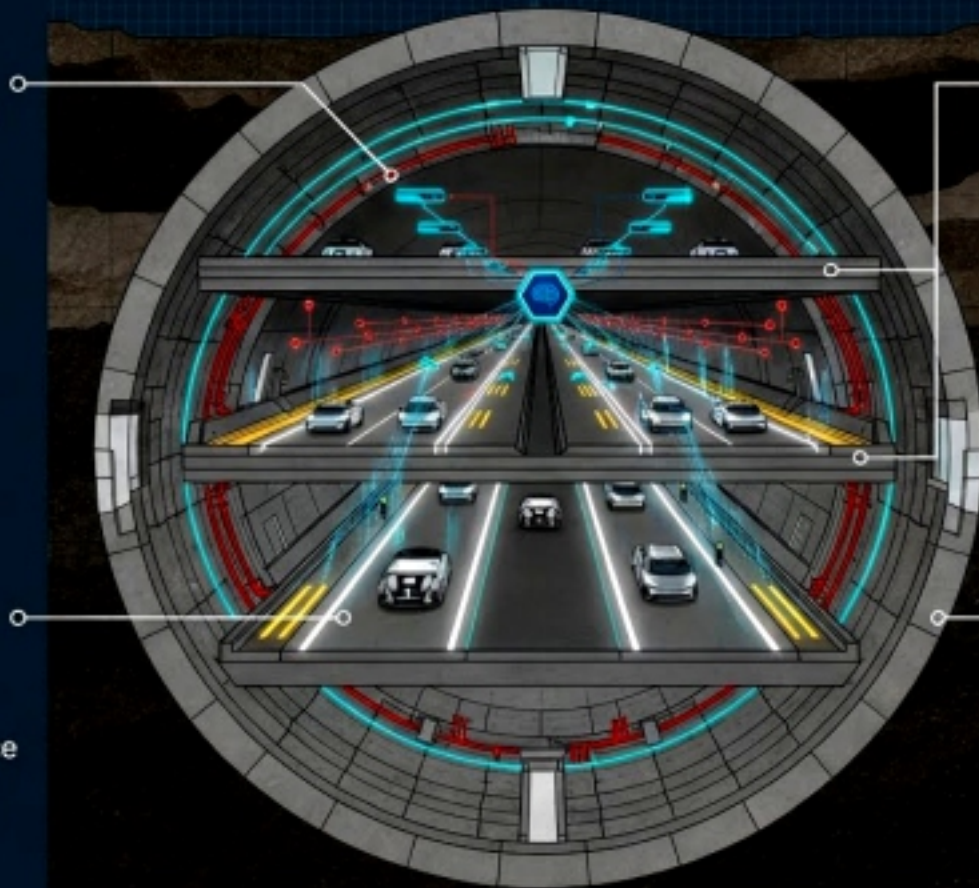
ENGINEERING VELOCITY: THE MULTI-MODAL ARTERY

AUTONOMOUS TRAFFIC CONTROL AI

Real-time sensor nodes and high-bandwidth communication antennas coordinate unbroken traffic flow.

CONTINUOUS PROPULSION

Inductive charging strips embedded in the road surface power vehicles at sustained speeds (55 mph - 60+ mph baseline).



PHYSICAL SEPARATION

Dedicated tiers isolate autonomous passenger vehicle lanes from heavy, high-capacity autonomous freight shuttles.

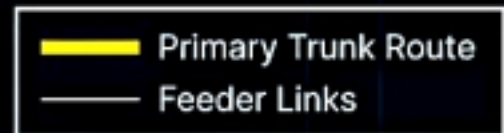
ABSOLUTE CLIMATE RESILIENCE

0% weather delays. Protected from surface-level storms, ice, and wind.



THE FEEDER NETWORK: ACTIVATING REGIONAL ECONOMIES

By linking secondary markets to the primary transcontinental trunk, Understructure USA effectively brings regional industrial and commercial centers into the global economic fold, reducing supply chain friction nationwide.



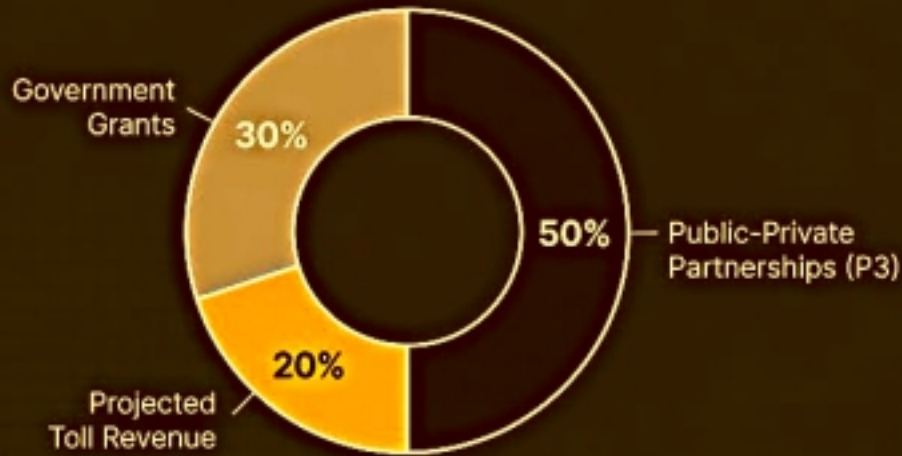
THE CONTINENTAL FRICTION MATRIX

Dimension	20th Century Surface Transit	22nd Century Understructure
Transit Time (LA to Chicago)	3-4 Days (Freight Rail/Truck)	4 Hours (Direct High-Speed)
Weather & Climate Resilience	Highly Vulnerable (Frequent Delays)	100% Protected (Zero Delays)
Freight Predictability	Congestion-Dependent	AI-Optimized & Isolated
Hub Economic Velocity	Real Estate Capped / Congested	Exponential Growth at Access Nodes
Environmental Footprint	High Surface Disruption & Emissions	Preserved Greenspace & Zero Emissions

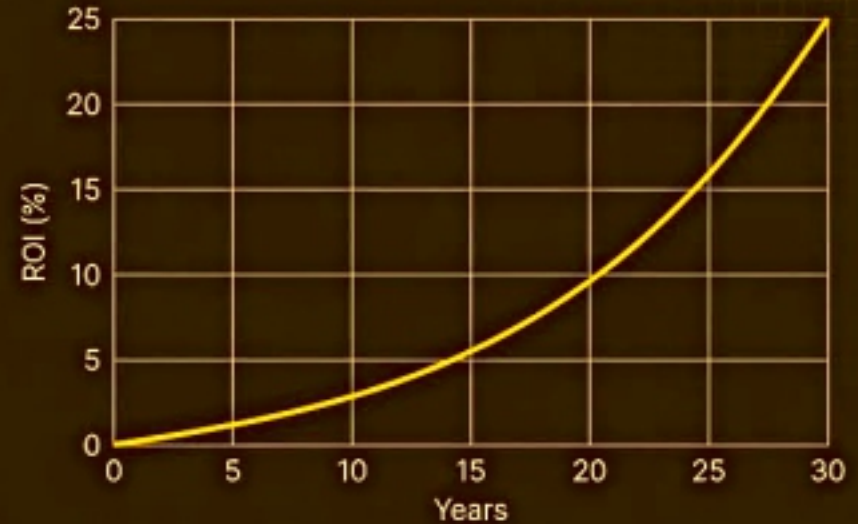


CAPITALIZING THE ENGINE: ECONOMIC MODEL & ROI

Projected Funding Sources



Projected ROI Over 30 Years



Strategic Action: Defining Trunk Routes early empowers City and State Authorities to lock in legislation, while enabling wise developers to acquire adjacent land for nationwide transport access.



The Local Multiplier: Surface-Level Commercial Boom

Anticipated Economic Benefits

- Massive job creation metrics through multi-decade construction and maintenance.
- Drastic reduction in surface road maintenance costs for municipalities.
- Stimulation of adjacent commercial real estate and industrial warehousing at feeder network access points.
- Increased economic stability through diversified, localized employment.



BEYOND TRANSIT: THE INTEGRATED NATIONAL ARTERY

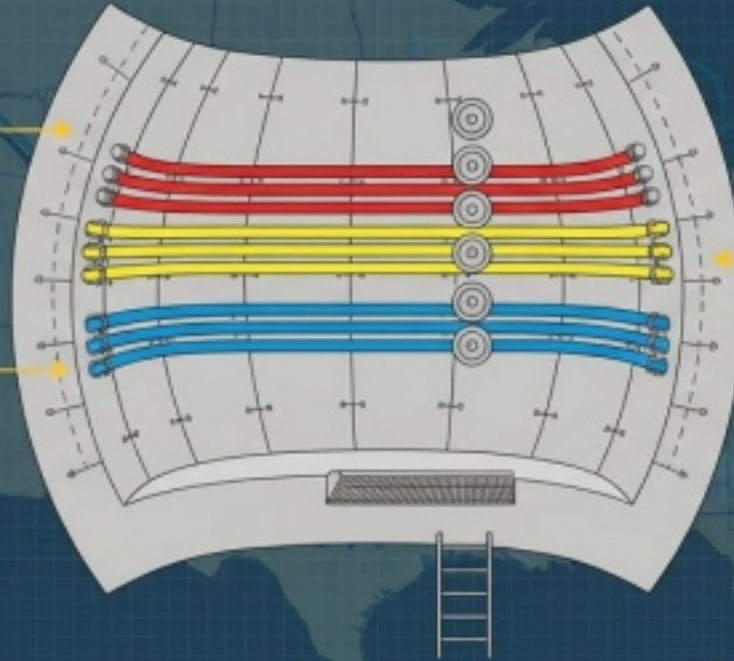
The supreme economic ROI of Understructure USA extends far beyond vehicle tolls. By operating as a shared-cost infrastructure, the network creates immediate secondary revenue streams.

POWER TRANSMISSION

Leasing space for secure, national high-voltage lines.

NATIONAL WATER GRID

Housing major aqueducts and flood mitigation pipelines to balance water availability between drought and flood zones nationwide.

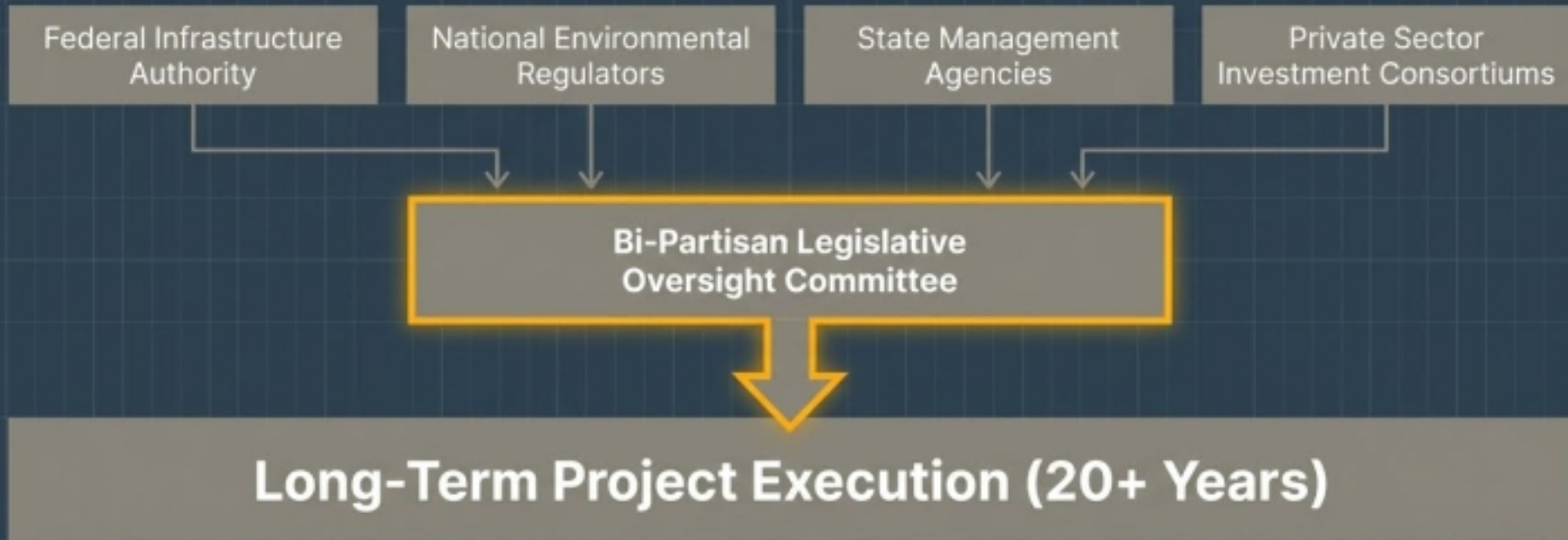


DATA & COMMUNICATIONS

Shielded, high-capacity fiber optic trunk lines.



The Blueprint for Execution: Regulatory Alignment



A proposed Bi-Partisan Legislative Oversight Committee guarantees long-term project continuity across electoral cycles, providing stable funding guarantees and unifying regulatory processes.

